



Supported Employment

For Jackson Care Connect Members

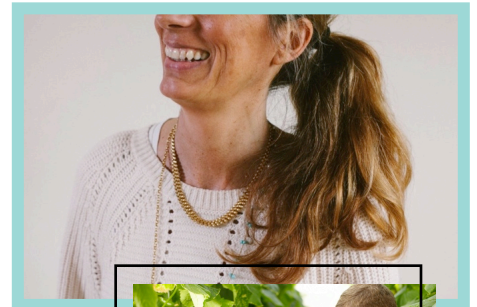
Helping People Help Themselves! Supported Employment is a service that provides people with barriers to employment the help they need to get and keep a job that matches their interests, skills and abilities. Support is available to help identify a job goal, to locate a job, to learn the job, and to maintain that job over time. We partner with individuals to make sure they have the support they need throughout the process.

Who Qualifies?

Jackson Care Connect members who have barriers to employment, including a mental illness, that interferes with their ability to work. We start with people where they are at – regardless of prior work history, criminal background, etc. The most important factor is that the individual wants to work!

People want to work for different reasons such as:

- To increase monthly income
- Use talents & skills
- Participate in the community
- Meet new people
- Acquire health insurance & other employment benefits
- Enjoy pride in work & increase self-esteem



Services Offered.

Career Exploration. For those who have not worked, or it has been a long time – we can help you think about your talents and interests as well as even get some experience to build your resume and develop local references.

Benefits & Work Incentive Planning. Often people are confused about how working will impact Social Security and other benefits. Ask us about the many incentive programs available!

Job Preparation. We can help you develop a resume, prepare for an interview and provide other services to get you ready for work!

Job Development & Placement. We provide specialized assistance to help match your interests, skills and abilities to the needs of community employers. We will provide support during the hiring process and help you figure out transportation, get needed clothing or tools, etc., so you are ready to start your new job!

www.columbiacare.org

Central Clinic: 524 Manzanita Street, Central Point, OR 97502 | P: 541.200.2900 | Kristin Mozzochi, Program Director



Supported Education

For Jackson Care Connect Members

The Supported Education program is designed to help individuals overcome student barriers and achieve their educational goals. **Supported Education can help a person navigate the following:**

- Educational Planning
- Admissions
- Financial Aid
- Enrollment
- Community-Based Supports
- Accessing Services at Rogue Community College (RCC) & Southern Oregon University (SOU)



ColumbiaCare's Supported Education Program is client-driven. Individuals are encouraged to identify their own educational goals and objectives based on personal preferences, strengths and experiences. The Supported Education Specialist will work closely with the client's school personnel and mental health team to insure the best access and support is provided for them to achieve their educational goals!



Who Qualifies?

Clients who are working with a ColumbiaCare therapist on their mental health recovery and have a desire to achieve educational goals can be referred to Supported Education.

Questions?

For more information about our Supported Employment and Supported Education programs, please contact Madonna Werthman, Supported Employment Program Manager at mwerthman@columbiacare.org.